

# Cottage

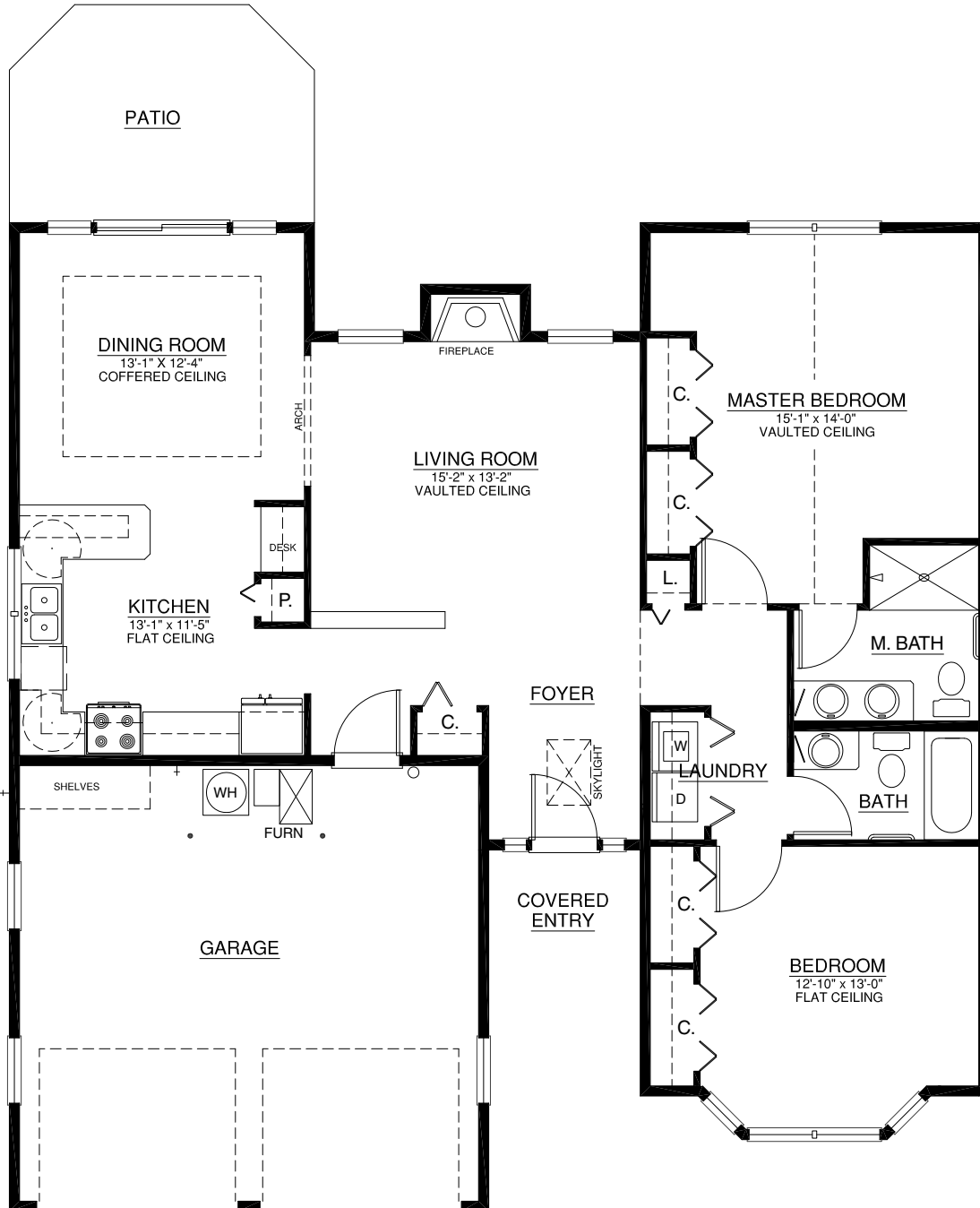
Full-service Retirement Community

**The Chelsea**  
1624 E 32nd Court  
1,333 sq. ft.  
2 Bedroom | 2 Bath



A Touchmark® community  
Est. 1980

For illustration purposes only. Square footage, actual room sizes, and features may vary. See construction documents.



## Waterford on South Hill

2929 S Waterford Drive | Spokane, WA 99203 | 509-536-2929 | 800-995-2930 | WaterfordSpokane.com

