

# Home

Full-service Retirement Community

## Manito

844 sq. ft.

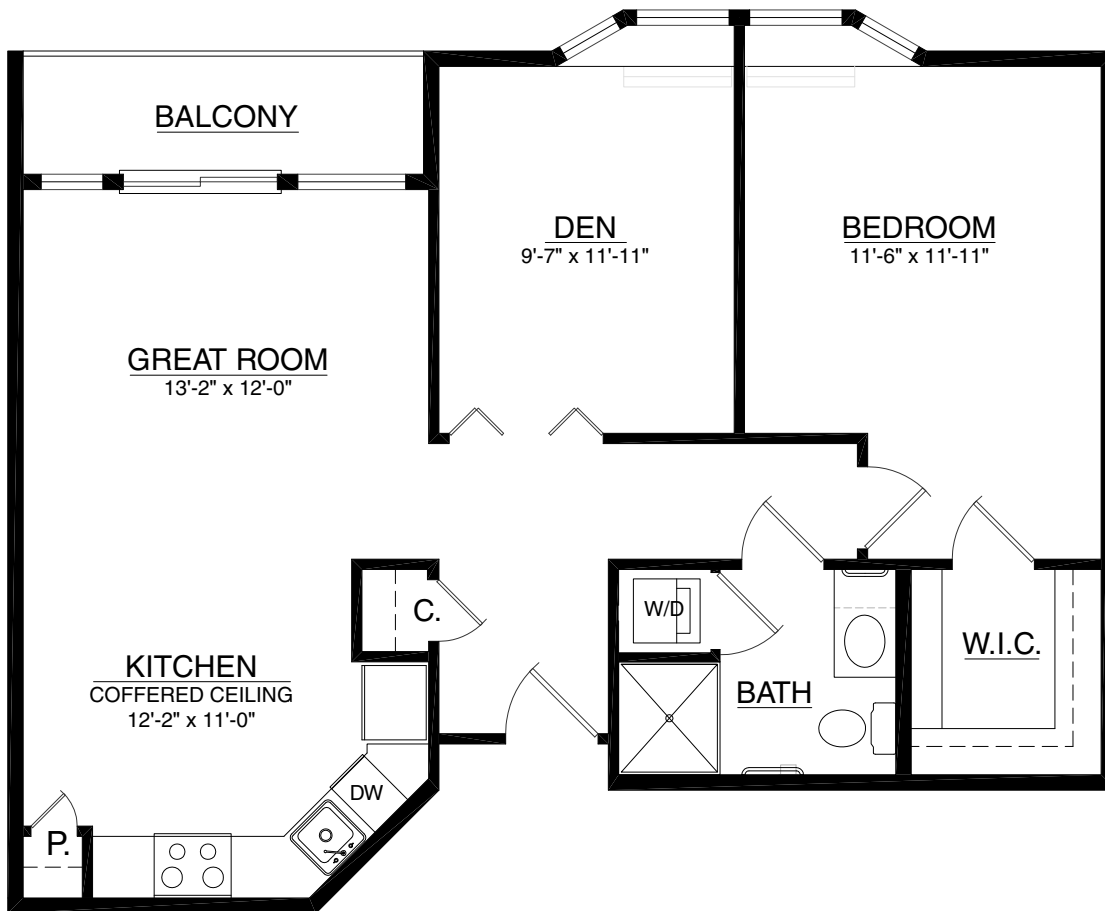
1 Bedroom | Den | 1 Bath



A Touchmark® community  
Est. 1980

For illustration purposes only. Square footage, actual room sizes, and features may vary. See construction documents.

Living room ceilings—vaulted on first and fourth floors, flat on second and third floors.



## Waterford on South Hill

2929 S Waterford Drive | Spokane, WA 99203 | 509-536-2929 | 800-995-2930 | WaterfordSpokane.com

